



THE OHIO STATE UNIVERSITY

Work from Home Tools



- ORVPN
- Remote Desktop
- Hints and Tips
- Simultaneous Ring (SimRing)



A Virtual Private Network (VPN)

- Secures your computer's Internet Connection
- Encrypts data being sent and received
- Keeps your information secure



What is the ORVPN?

The ORVPN (Office of Research Virtual Private Network)

- Changes the network connection from your home to appear as if you are connecting from a campus location.
- Allows access to campus only networks
- Gives you access to your shared drives

Office of Research Windows or MAC VPN Setup

<https://go.osu.edu/orvpn> and login using your OSU Username and password. (Note: Make sure there are no other web browser windows open).

After you login you will see this screen...



Login

Please enter your username and password.

GROUP:

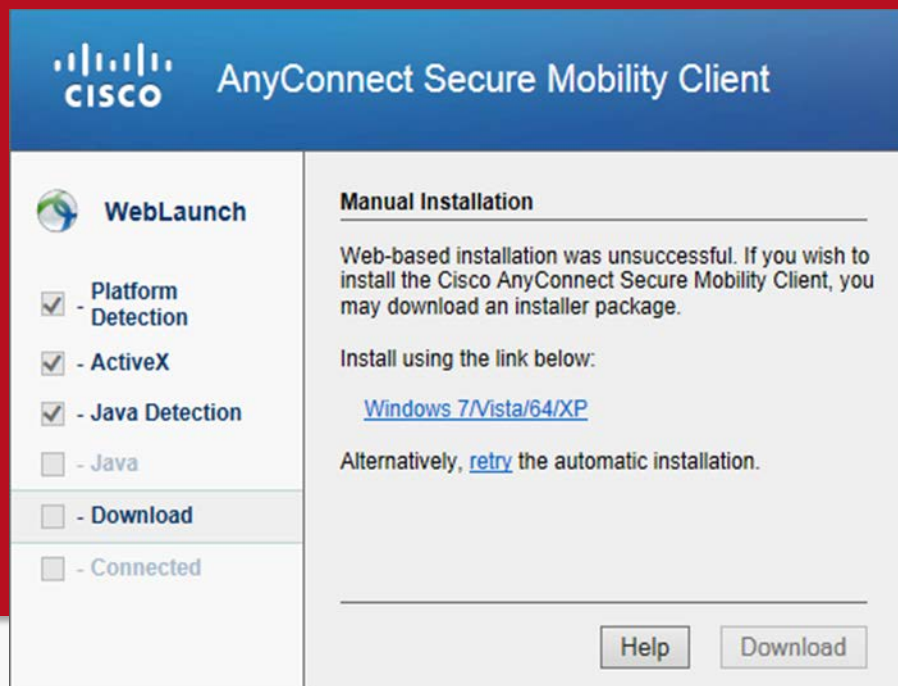
USERNAME:

PASSWORD:

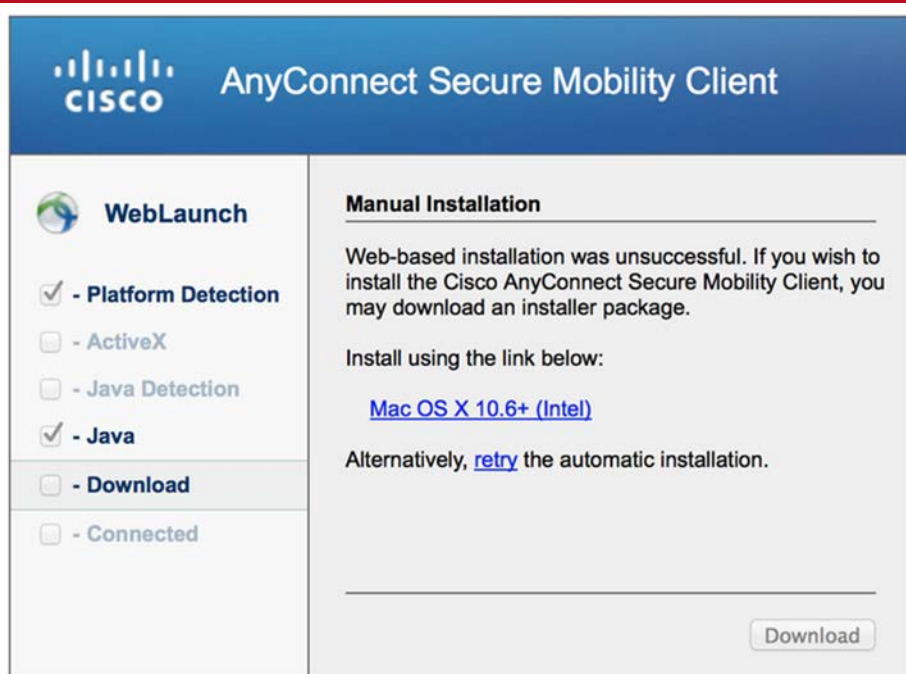
Login

Office of Research Windows or MAC VPN Setup

- If you are asked to install the ActiveX Control click **Install**
- If the Java client on your machine is not up to date, you will need to update it.
- If the install times out, manually download the client.



The screenshot shows the Cisco AnyConnect Secure Mobility Client installation window for Windows. The interface is split into two main sections. On the left, under the 'WebLaunch' heading, there is a list of options: 'Platform Detection' (checked), '- ActiveX' (checked), '- Java Detection' (checked), '- Java' (unchecked), '- Download' (unchecked), and '- Connected' (unchecked). On the right, under the 'Manual Installation' heading, a message states: 'Web-based installation was unsuccessful. If you wish to install the Cisco AnyConnect Secure Mobility Client, you may download an installer package.' Below this, it says 'Install using the link below:' followed by a blue hyperlink for 'Windows 7/Vista/64/XP'. A note at the bottom of the right section says 'Alternatively, [retry](#) the automatic installation.' At the bottom right of the window are two buttons: 'Help' and 'Download'.



The screenshot shows the Cisco AnyConnect Secure Mobility Client installation window for Mac OS X. The interface is split into two main sections. On the left, under the 'WebLaunch' heading, there is a list of options: '- Platform Detection' (checked), '- ActiveX' (unchecked), '- Java Detection' (unchecked), '- Java' (checked), '- Download' (unchecked), and '- Connected' (unchecked). On the right, under the 'Manual Installation' heading, a message states: 'Web-based installation was unsuccessful. If you wish to install the Cisco AnyConnect Secure Mobility Client, you may download an installer package.' Below this, it says 'Install using the link below:' followed by a blue hyperlink for 'Mac OS X 10.6+ (Intel)'. A note at the bottom of the right section says 'Alternatively, [retry](#) the automatic installation.' At the bottom right of the window is a single button: 'Download'.



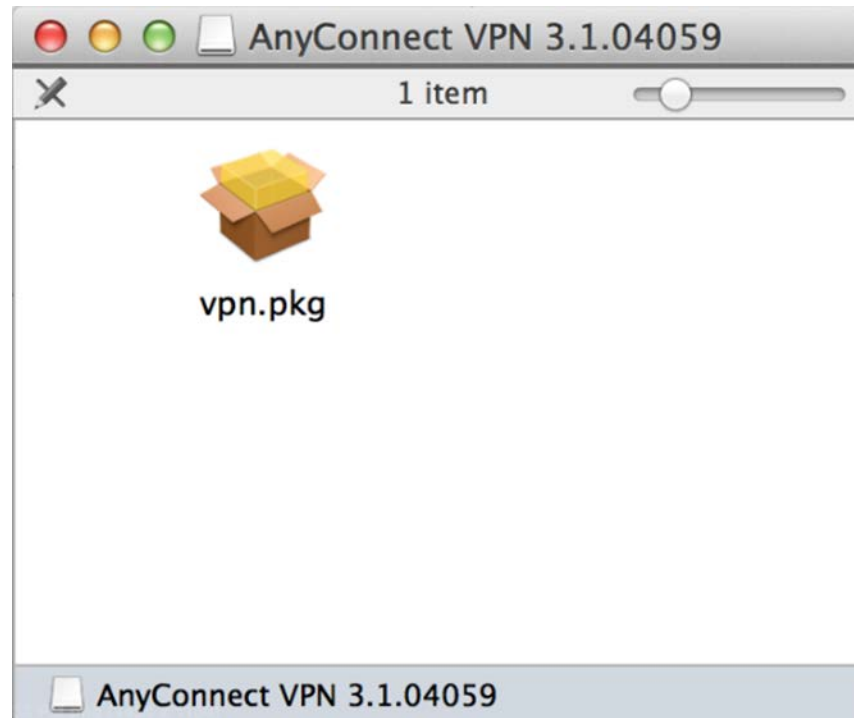
Office of Research Windows VPN Setup

- Click on the Windows logo on lower left
- Go to “All Programs”
- Look for Cisco or Cisco Systems VPN Client
- Click on VPN



Office of Research MAC VPN Setup

Click on the `vpn.pkg` to start the install





Office of Research MAC VPN Setup

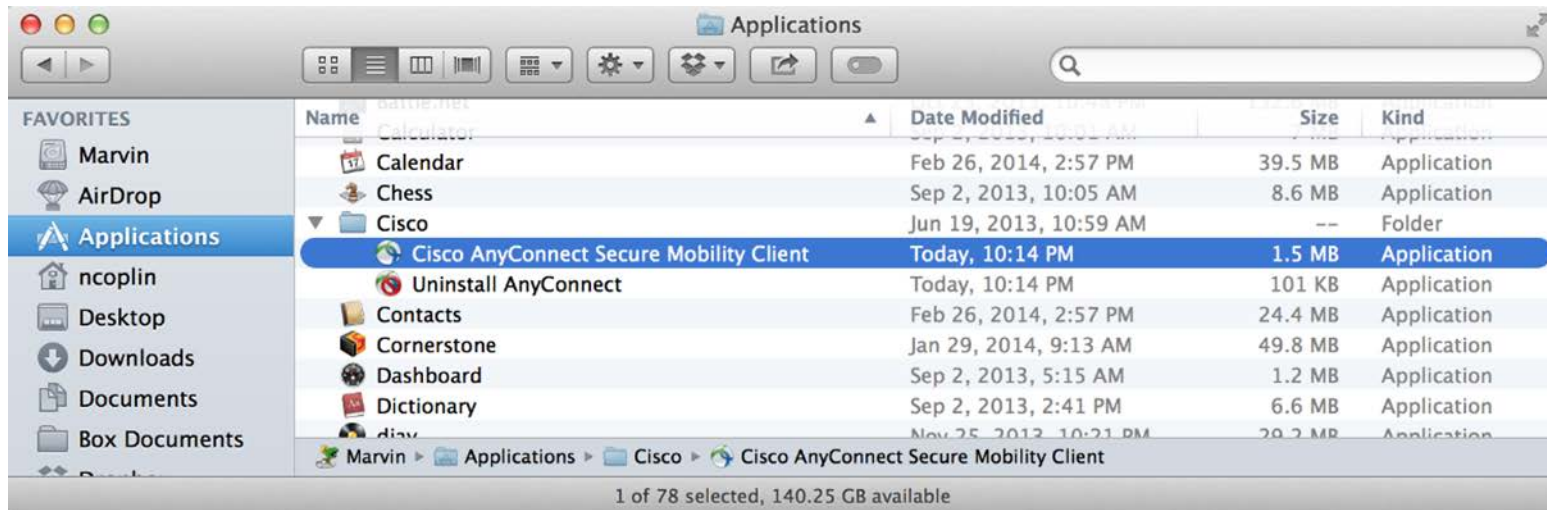
Select a destination to install





Office of Research MAC VPN Setup

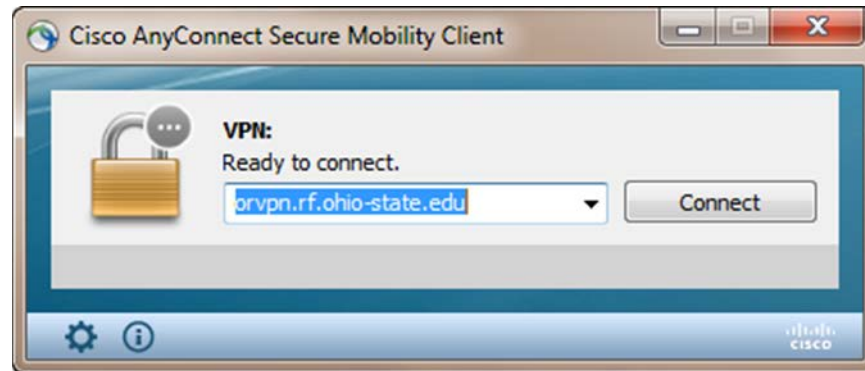
To connect to the VPN client, search spotlight for “Cisco” or navigate to your Applications folder.





Office of Research Windows or MAC VPN Setup

The connection entry for the Office of Research VPN is pre-configured as part of the installation.

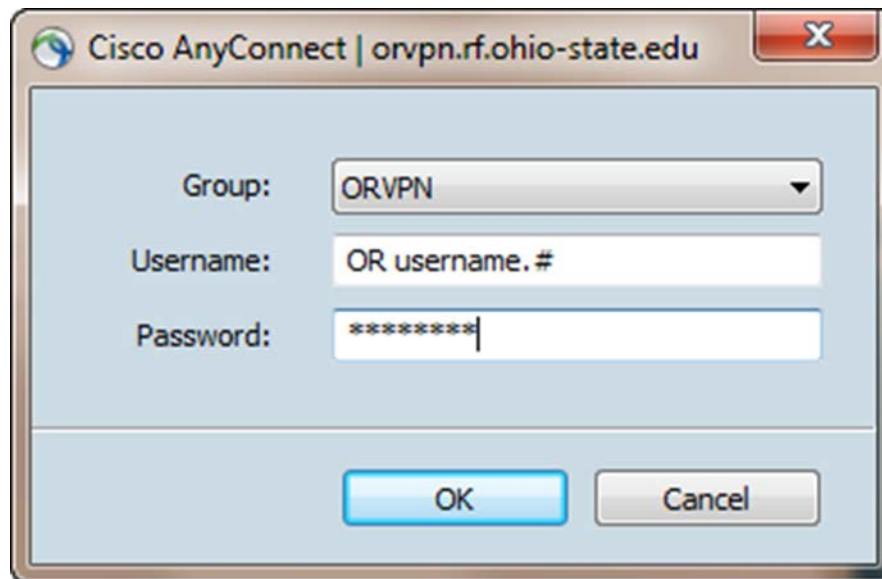


If it is not, type in `orvpn.rf.ohio-state.edu`



Office of Research Windows or MAC VPN Setup

Enter your lastname.# and your Office of Research Network Password to access the VPN.





What is Remote Desktop?

Mechanism that allows you to connect to your work PC from another computer.

- Easiest way to access your Shared Drives
- Will be slower than being on your work PC
 - All activity is being encrypted
 - Speed depends on your network speed at home
- Your work PC will need to be turned on



Windows Remote Desktop Connection

Before using Remote Desktop, you will need to be logged in to the VPN.



Enter your work Computer Name at the prompt followed by .rf.ohio-state.edu



MAC Remote Desktop Connection

Download by searching the Mac App Store for “Microsoft Remote Desktop”

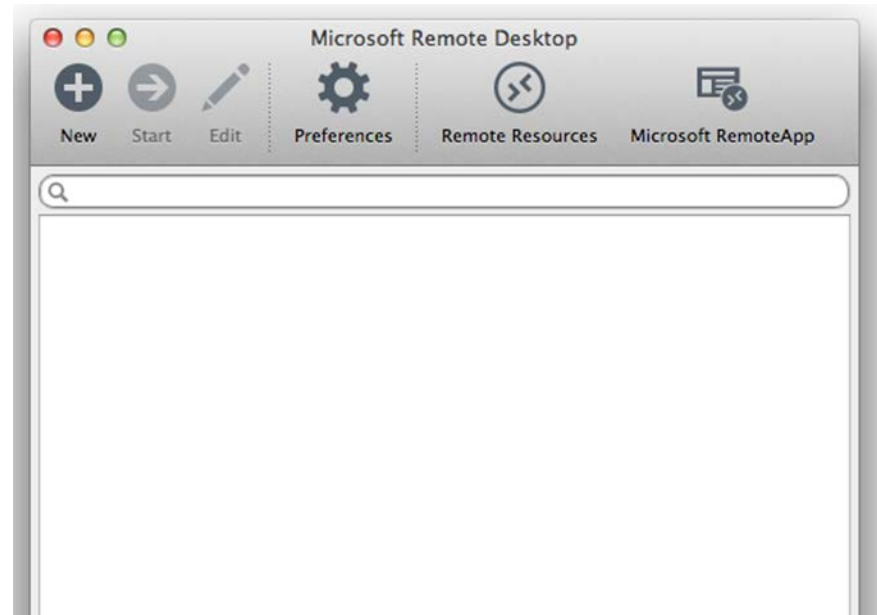


or visiting <https://itunes.apple.com/us/app/microsoft-remote-desktop/id715768417>



MAC Remote Desktop Connection

Start Remote Desktop from the Applications folder. It will initially be empty.

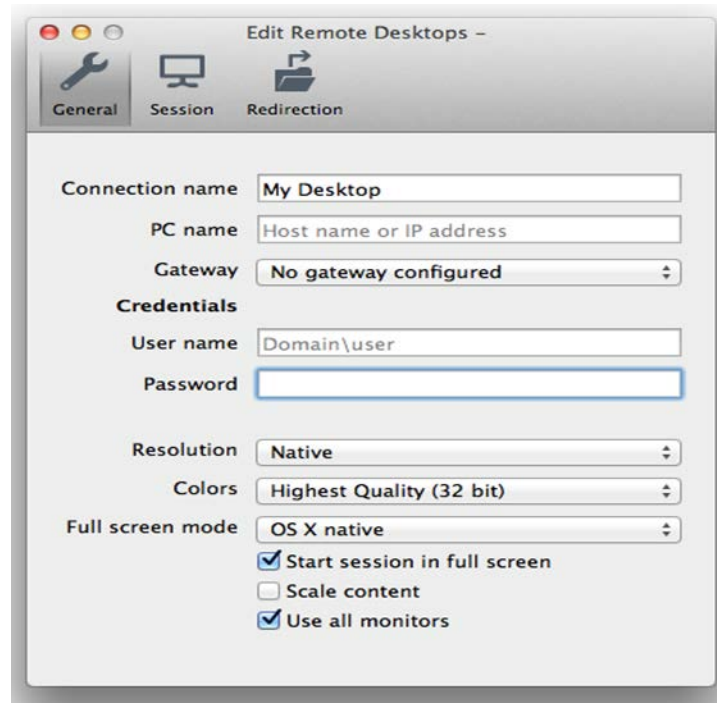


Click New.



MAC Remote Desktop Connection

Enter the information requested and a name for the connection.

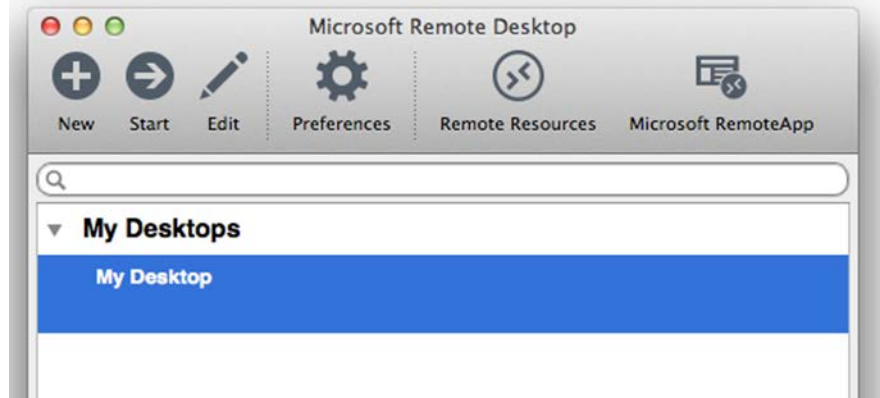


Close the window when finished.



MAC Remote Desktop Connection

The connection is now listed in the main Remote Desktop window. Click the name of the connection, then click Start.





Hints and Tips

- Before using Remote Desktop, notify OR Help Desk
- Personal Web Browsing should be done outside of VPN
 - Minimize your Remote Desktop window
- May log out after a few hours
- If you get errors, close your Remote Desktop window and disconnect from the VPN. Then reconnect and try again.
- If your home printer does not work, disconnect from the VPN



SIMULTANEOUS RING

- Also called SimRing
- Allows you to program your campus telephone number to ring on up to five different telephones (campus and off campus) at the same time.
- Supported by the Office of the CIO.
- **Cost per month: \$0.50**



Conclusion

- Additional information at <https://orhelp.osu.edu/>
- Copy of this presentation
- Knowledge base articles for VPN and Remote Desktop